



SUPERCAST X6 HDMI

INSTALL GUIDE _ DRIVER

Table of Contents

1. Product	3
1.1 Introduction	3
1.2 Environment	4
2. Installation	5
2.1 Part Names and Functions	5
2.2 Setting up	5
2.3 Driver and program installation	7
2.4 Drivers and programs uninstallation	10
2.5 Connecting External Video Equipment	10
APPENDIX	14
FAQ	14
Liability Statement	17

1. Product

1.1 Introduction

Thank you for choosing SuperCast X6 HDMI.

The main features and functions of SuperCast X6 HDMI are as follows.

- Digital HDMI video (max. 2048x1080p / 1920x1200p 60Frame) input
- Various PC resolution input (Free Resolution / Depend on EDID information, some resolutions are to be input at a resolution similar to the actual resolution.)
- Lossless high resolution images capture in real time (game mode supported)
- DirectShow driver supports various external software (Third party software support)
- Support DirectShow compatible webcam for external programs such as broadcast software / streaming programs
- Original digital audio (AC3, DTS) real-time decoding and playback / PCM audio playback and recording support
- Smartphone, Tablet (Pad) HDMI Mirroring Support
- High resolution component (up to 1080i) external input
- Capture input high resolution image to still image (JPEG, BMP format)
- Support file playback
- Recording in AVI / MPG / TP / MP4 / MKV format using various codecs specified by the user

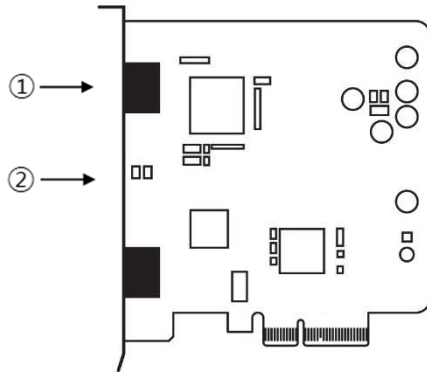
1.2 Environment

The following specifications are required for SuperCast X6 HDMI to input and record high-resolution images.

	Minimum requirement High resolution(720P, 1080i, 1080p) Component / HDMI playback	Recommended requirement High resolution (720P, 1080i, 1080p) Component / HDMI playback + RECORDING
CPU	Dual Core 2GHz or faster, or equivalent AMD CPU	Recording 720p/1080i resolution : Intel Quad core CPU or equivalent AMD CPU Recording 1080p resolution : i5 2.8GHz CPU or faster recommended
Memory	2GB or more	
Mainboard	Compatible to Express 2x speed bus format (utilizing 4x / 8x / 16x lane slot), PCI-Express 1x : INCOMPATIBLE	
Graphic Card	nVidia 200 Series equivalent or greater AMD Radeon 4000 equivalent or greater Intel 3000 Series equivalent or greater	
Hard Drive	SATA hard drive with 100MB or more free space	For high definition/resolution video recording, it is strongly recommended using a recording dedicated hard drive.
Operating System	Windows 10 / 8.1 / 8 / 7 (x86/x64)	
Sound Card	Sound card designated as master volume device in Windows	
The Package	SuperCast X6, User manual, Multi-cable (Component, Line-In)	

2. Installation

2.1 Part Names and Functions



■ Input Ports

①	HDMI Input	Receive HDMI signals from external video equipment (game console, IPTV, digital set-top box, etc.).
②	Multicable (Component + Line-In) input	Used when connecting external video equipment (game machine, IPTV, digital set-top box, etc.) to receive high-resolution component video input and stereo line-in audio input (RCA).

2.2 Setting up

■ Precaution

Shut down your computer completely before installing SuperCast X6 or, otherwise critical damage expected to SuperCast X6 and/or the computer. All the connection, like, HDMI, Component, must be done before you run the application.

Just like most of computer PCI cards, X6 HDMI is *STATIC SENSITIVE DEVICE*. Please pay attention during the handling.

■ Supported OS

OS environment: SuperCast X6 requires Windows 7 or higher OS installed for normal operation and cannot be used for incompatible OS such as Linux and MAC.

The SuperCast X6 driver and software are always available on the Skydigital homepage. Please download the latest version from the homepage.

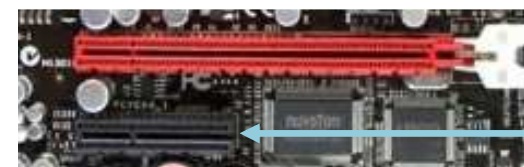
Software download : http://www.supercast.co.kr/bbs/bbr_5

■ Legally licensed Windows OS only.

Please check to see if your Windows OS is a legally licensed and full version by Microsoft.

2.2.1 Connecting SuperCast X6 HDMI to your computer

- ① Shut down your computer completely before installing SuperCast X6 or, otherwise critical damage expected to SuperCast X6 and/or the computer.
- ② Remove AC power cable and slide computer cover to open.
- ③ Insert SuperCast X6 to available PCI-Express slot.
- ④ SuperCast X6 utilizes PCI-E 2x and is compatible with PCI-Express 4x / 8x / 16x lane PCI-Express slot. (See the picture below)



- ⑤ Attach the product to the PCI Express slot and secure it firmly to the PC case with screws.

- ⑥ Close the slide cover of the PC

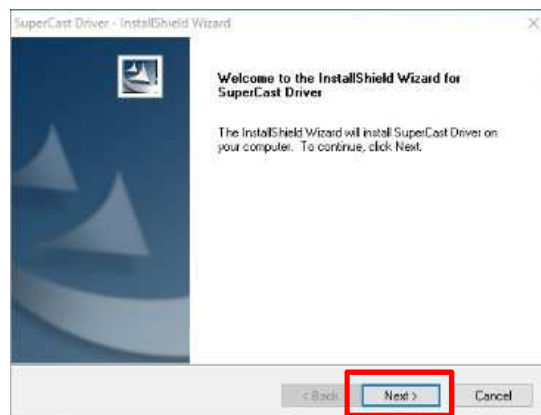
2.3 Driver and program installation

2.3.1 Driver Installation

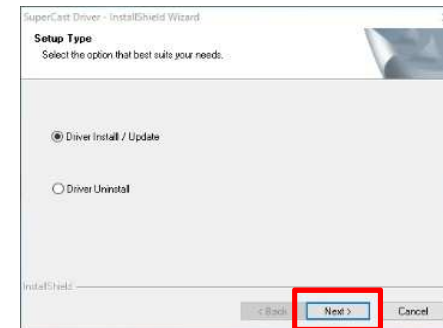
- ① Boot up the computer with completely installed SuperCast X6 HDMI card.
- ② 'Found New Hardware Wizard' box appears for the Windows 7 or earlier version of Windows. If this is the case, please click on the "Cancel" button to close the dialog box.



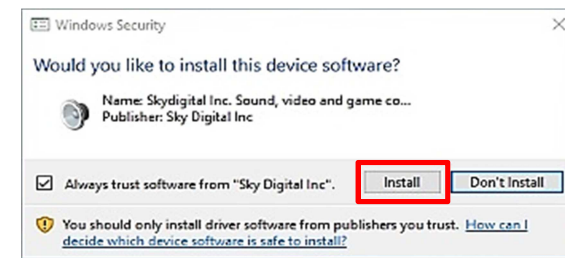
- ③ Please run the unzipped Driver file downloaded from Skydigital website. (Since the downloaded data is a zipped file, you can run it after extracting the zip.)
- ④ Choose language and then 'SuperCast-InstallShield Wizard' box will show up. Click on the 'Next' button to move on.



- ⑤ 'Setup Type'. Since you're about to install driver, select "Driver install/Update" and click on the "Next" button.

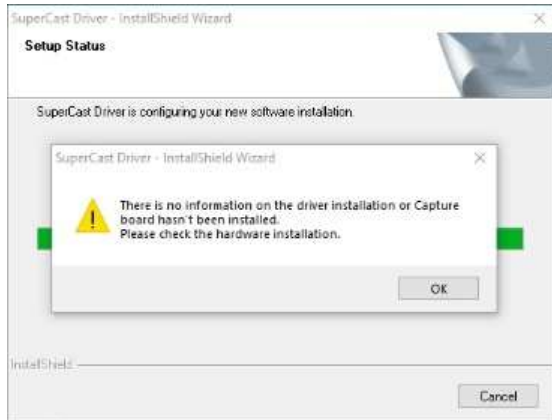


- ⑥ Computer start to process driver file installation. During the installation, Windows Security Box will pop up. Click on the "Install" button to proceed.



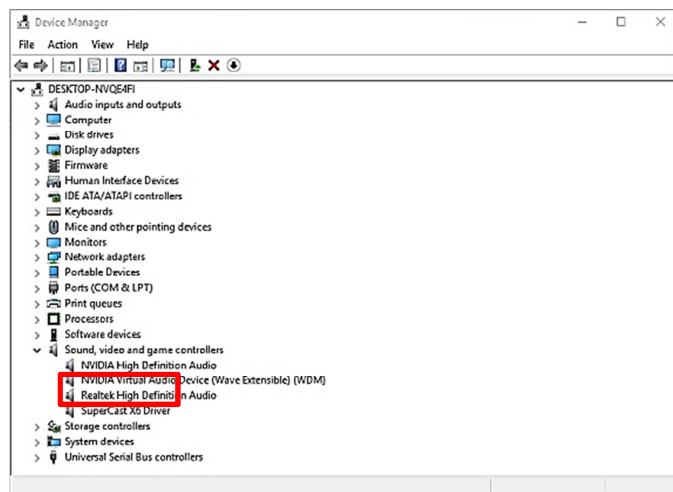
- ⑦ Once the installation is successfully done, 'InstallShield Wizard Complete' box will appear. Select restarting the computer and click on the 'Finish' button. Computer will restart .

NOTE : During the setup, the system communicates with SuperCast X6 to make sure the card is properly installed to the computer and proceed. As the system fails to confirm the communication, it will display an alert message, telling to you check on the card to see whether or not the card is properly installed on your computer.



You may reinstall the card or move the card to the other available PCI-E slot, and restart the driver installation. The SuperCast X6 must be firmly inserted to PCI-E lane. Other possible causes are device collision or contamination of PCI-E slot/the card, bad contact. Please clean the contact and try again.

⑦ When Windows restarts, check that the device installed in “Sound, Video and Game Controller” in “Device Manager” is correctly set as below.



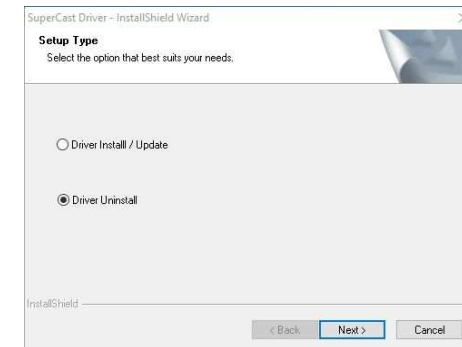
The device must be set up in Device Manager as shown in the figure above.

2.3.2 SuperCast Capture Program Installation

Please unzip and run the downloaded “SKY Capture Program(SuperCast X6).exe” from Skydigital website. The file name may be changed as the version updates.

2.4 Drivers and programs uninstallation

① To remove the driver, start the driver setup file in the same way as the installation method, and select “Driver Uninstall” to remove the installed driver simply.



② After uninstalling the driver, you must restart the system.

③ If order to delete Program itself, select Control Panel > Add / Remove Programs and select 'SKY Capture Program (SuperCast X6 HDMI)' from the list to remove the installed program.

2.5 Connecting External Video Equipment

2.5.1 Connecting external device

Before connecting the external video equipment, please refer to the table below and check the supported audio formats for each video mode.

■ Combinations of each video/audio mode input

- . Component (Video) + Line-In (Stereo, Audio)
- . Component (Video) + HDMI (Audio) / Line-In (Stereo, Audio) + HDMI (Video)
- . HDMI (Audio and Video)

■ Input types by each audio mode.

The audio types according to the audio input status are as follows.

	PCM	AC3	DTS
Line-In (Stereo)	O 2CH 44.1KHz / 48KHz	X	X
HDMI (Audio)	O 2CH 44.1KHz / 48KHz	O 2CH / 6CH 48KHz	O 2CH / 6CH 48KHz

■ Resolution supported by external image mode (HDMI EDID information)

The resolutions in the table below are input and recordable resolutions, and other resolutions are entered with over-scanned resolution (resolution close to the resolution in the table below).

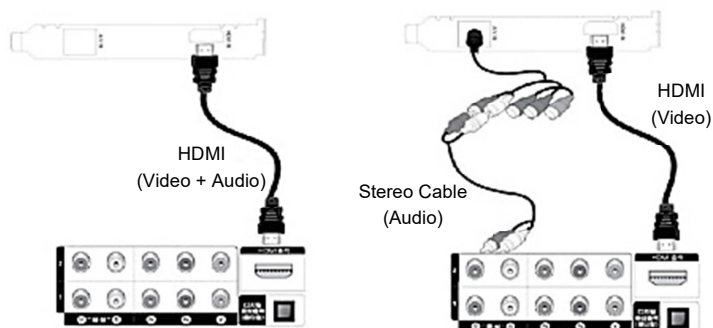
Mode Resolution	HDMI	Component
640 x 480p	O	
720x480i	O	O
720x480p	O	O
720x576p	O	
800 x 600p	O	
1024 x 768p	O	
1280 x 720p	O	O
1280 x 800p	O	

1280 x 960p	O	
1280 x 1024p	O	
1400 x 1050p	O	
1440 x 900p	O	
1600 x 900p	O	
1600 x 1200p	O	
1680 x 1050p	O	
1920 x 1080i	O	O
1920p x 1080P	O	
1920 x 1200p	O	
2048x1080	O	

※ The resolution information above may be changed subject to the EDID ROM updates.

■ HDMI cable connection

You may input digital video/audio by HDMI cable

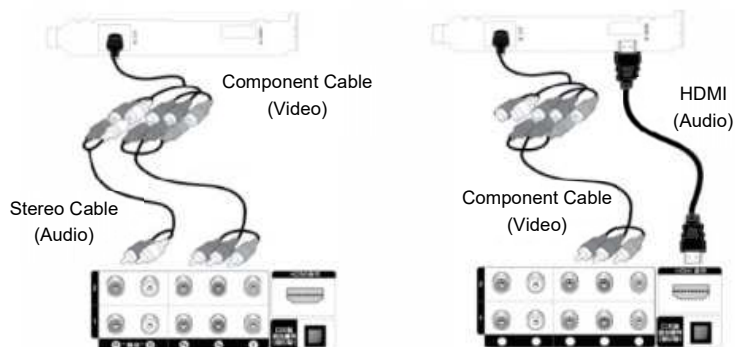


Video/Audio input through HDMI

HDMI Video/Line-In Audio Input

■ High resolution component connection

SuperCast X6 supports high-definition, analog video input through component connection. The image uses three color lines of green, blue and red connectors. Meanwhile, white and red connectors for stereo input and HDMI connector digital audio input, respectively.



Component video / Line-In audio input

Component video / HDMI audio input

APPENDIX

FAQ

If the SuperCast X6 HDMI does not work properly, please check the following before contacting the service center.

Q 1. I tried recording by setting HDMI input, but recording does not proceed.

A 1. SuperCast X6 HDMI products are basically employing HDCP scrambling. Therefore, if the connected external video equipment output HDCP scrambled contents, recording will be not processed, still, you can see the contents. And there will be a dialog box shows '(This content is protected by HDCP)' error message about HDCP. In case, you're working on 3rd party application, there will be blackout on the monitor.

Q 2. The picture and sound are cut off during recording.

A 2. Because SuperCast X6 HDMI can input HDMI high resolution, it requires a high system performance when recording 1080p video. Therefore, it is recommended to use an encoder (compression codec) to compress and store in real time, since uncompressed recording may be almost impossible when the optimum system requirement is not met.

Also, when recording to a hard disk where Windows is installed, the processor may be affected greatly. Therefore, it is recommended to record to a different internal hard disk where Windows is not installed or use dedicated hard drive for recording.

Q 3. The screen size of the control program does not match the actual image size and there is a margin on the screen window.

A 3. Symptoms that may occur depending on HDMI resolution. SuperCast X6 HDMI can input all resolutions, but since the resolution supported by the EDID ROM is limited, you can see the screen full at the resolution of EDID ROM, but if not, you will be input at a resolution slightly larger (Resolution similar to input resolution in EDID) than the actual resolution.

In this case, black margins will occur in the upper, lower, left, and right areas.

Q 4. Can I move the input video to the second monitor because it is a VGA card that uses two monitors?

A 4. The second monitor output may be possible upto VGA and driver. If your VGA card can play (render) normal video on the second monitor, it is possible.

Q 5. Does the problem occur when running SuperCast X6 HDMI program and game at the same time?

A 5. In programs and games, 3D acceleration is performed by the driver of the graphics card.

This is up to how much resources are running on 3D acceleration for the game. If you accelerate too much to the game, there may be issues on the use of the control program.

Also, if you are playing a 2D game such as Starcraft, etc., and you want to force the screen resolution to 640 x 480 when you enlarge the full screen, the window resolution will change and the control program will not run normally.

Q 6. When connected to an external device, the volume is reduced.

A 6. In the control program, the sound is slightly reduced to reduce incoming noise, and this is also true for other capture boards or TV reception cards. In SuperCast X6 HDMI program, amplification can be done only for PCM audio. If you amplify the sound in PCM audio amplification in the "Preferences" -> "Program" menu, you can make the sound louder.

However, this function is only possible with PCM audio, and digital compressed audio such as AC3 can't be amplified.

Q 7. What USB port can I connect SuperCast X6 HDMI?

A 7. SuperCast X6 HDMI must be connected to USB 3.0 port, which is connected to the USB 3.0 port of the controller (USB 3.0 card for PCI-E for desktops / PCI Express-type USB controller card for laptop) by attaching a USB 3.0 port controlled by a built-in USB 3.0 controller on the main board or a separate controller card.

Q 8. Is it compatible with all USB 3.0 controllers?

A 8. The Intel USB 3.0 or NEC USB 3.0 controller built into the motherboard is compatible without any problems. However, if you use a separate PIC-E type USB 3.0 controller, it is mostly okay. But when there is not enough bandwidth, abnormal input might be happening with 1080p 60Frame only.

■ The contents of this manual are subject to change without prior notice due to specification changes and performance enhancements.

■ Reproduction or distribution is expressly prohibited without the prior written consent of the Skydigital Inc. Any violation may be punished for copyright infringement.

■ If there is any mistake or inquiry in the contents of this manual, please contact Sky Digital Customer Support Office.

** The latest version of the Driver & Capture Program can be downloaded from website.

Driver & Software Download: http://www.supercast.co.kr/bbs/bbr_5.
Visit www.supercast.co.kr and select **Supercast / X6** for Product Info and the detailed specifications.

Liability Statement

Skydigital warrants that this product will be free from defects in materials and workmanship for a period of 1 year from the date of purchase. If a product proves to be defective during this warranty period,

Skydigital, at its option, either will repair the defective product without charge for parts and labor, or will provide a replacement in exchange for the defective product.

In order to obtain service under this warranty, you the Customer, must notify Skydigital of the defect before the expiration of the warranty period and make suitable arrangements for the performance of service. The Customer shall be responsible for packaging and shipping the defective product to a designated service center nominated by Skydigital, with shipping charges prepaid. Customer shall be responsible for paying all shipping charges, insurance, duties, taxes, and any other charges for products returned to us for any reason.

This warranty shall not apply to any defect, failure or damage caused by improper use or improper or inadequate maintenance and care. Skydigital shall not be obligated to furnish service under this warranty: a) to repair damage resulting from attempts by personal other than Skydigital representatives to install, repair or service the product, b) to repair damage resulting from improper use or connection to incompatible equipment, c) to repair any damage or malfunction caused by the use of non Skydigital parts or supplies, or d) to service a product that has been modified or integrated with other products when the effect of such a modification or integration increases the time or difficulty of servicing the product.

This warranty is given by Skydigital In Lieu of any other warranties, Express or implied. Skydigital and its vendors disclaim any implied warranties of the merchantability or fitness for a particular purpose. Skydigital's responsibility to repair or replace defective products is the whole and exclusive remedy provided to the customer for any indirect, special, incidental or consequential damages irrespective of whether Skydigital or the vendor has advance notice of the possibility of such damages. Skydigital design is not liable for any illegal use of equipment by customer. Skydigital is not liable for any damages resulting from use of this product. User operates this product at own risk.

© Copyright 2020 Skydigital & Supercast. All rights reserved. 'Supercast®', 'Skydigital®' logo are the trademark of Skydigital Inc. The Dolby logo is a trademark of Dolby Laboratories. The DTS logo is a trademark of DTS. All other company and product names may be trademarks of their respective companies with which they are associated.



SUPERCAST
X6 HDMI

INSTALL GUIDE _ DRIVER

Product appearance and specifications are subject to change without prior notice to improve product performance

- The contents of this manual are subject to change without prior notice due to changes in product specifications and enhancements.
- This user's manual cannot be reproduced without prior consent of Sky Digital, Inc., and violations of this manual may be punished for reasons such as copyright infringement.
- If you have any incorrect parts or inquiries in the contents of this manual, please contact Supercast's Customer Support Team at <http://supercast.co.kr>.